

BA1-PP Pole Cornering Plate



Description:

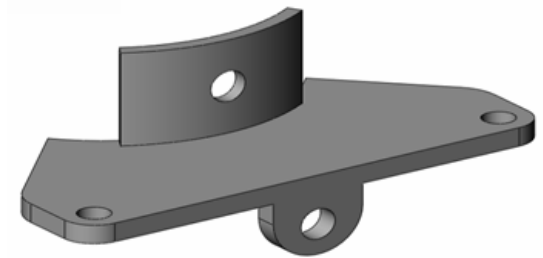
- BA1-PP is a mounted bracket used to double dead-end spacer cable covered conductors
- Bracket is made of galvanized structural steel

Benefits:

- Allows Spacer Cable conductors to be dead-ended directly to the pole
- * Attaches to pole with one 3/4" machine bolt
- * Accepts Hendrix SSP-2 pin for horizontally mounted pin insulators for supporting jumper wire

Application:

- The BA1-PP can be used on line angles from 7 to 90 degrees
- * The BA1-PP may be used for systems from 5kV to 69kV



Dimensions:

