

Torque Bolts

The Vise Top Bolts are furnished with Vise Top Pin Insulators and may be purchased separately for replacement purposes. They are made of glass reinforced black nylon and designed to be tightened using the break-away ring. The ring is designed to break at an optimal torque to ensure proper gripping force on the conductor.

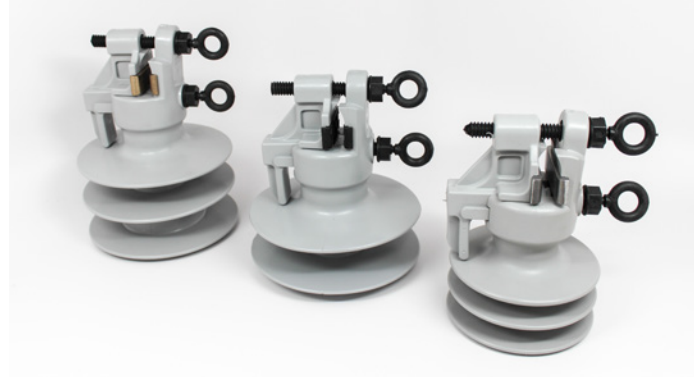


Cat #: B-1
(for VT Insulators)

Weight: 5.0 lbs./50 pieces

Length: 6 1/2"

Material: Black nylon



B-1 Torque Bolt fits Vise Top (VT) models

Line Post Studs



The Line Post Studs are hot dip galvanized steel studs for use with Hendrix Line Post insulators. Each stud features a serrated collar and is furnished with additional hardware to secure the 3/4" center-tap base of a line post insulator. Two stud models are available:

- Long shank assembly for wood crossarms
- Short shank assembly for steel arms and brackets

Catalog #	Description
SBS	3/4" stud bolt, short; 1 3/4"; for steel arms and brackets
SBL-01	3/4" stud bolt, long; 6 9/16"; for crossarms (wood or fiberglass)