

BV-35 Vertical Tap/Angle Bracket

Description:

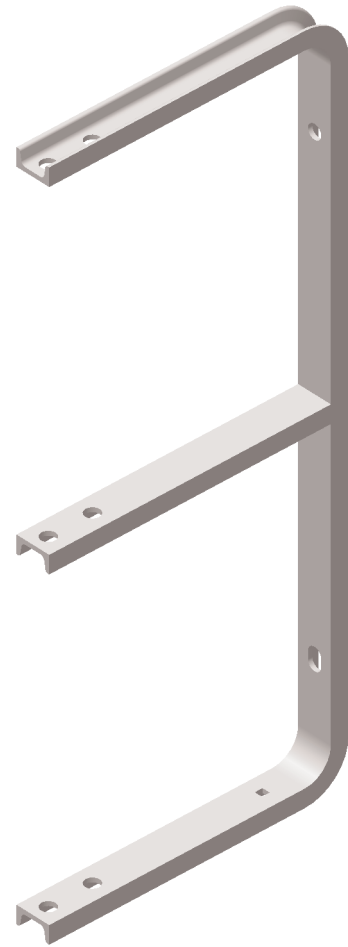
The BV-35 is a vertical tap/angle bracket used with Hendrix Spacer Cable Systems. The bracket is formed using 3.0" channel and is hot dip galvanized after fabrication.

Benefits:

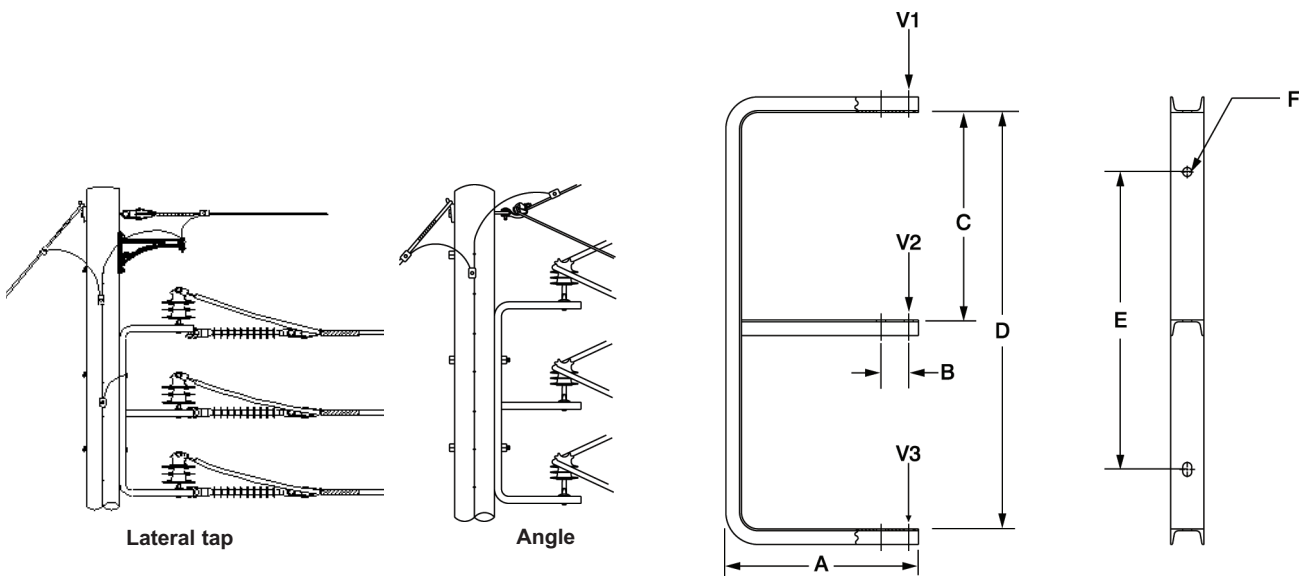
- The phase conductors are supported in a vertical orientation to permit taps to be made while still maintaining a compact configuration
- Simple, compact alternative to crossarm angle or tap construction
- Ground Lug Provision

Application:

The BV-35 is designed for primary lateral taps at all voltages through 35kV. These brackets can also be used on angles up to 90° in applications where a vertical configuration of the phase conductors is desired. The bracket should be applied along with Hendrix HPI polyethylene insulators and covered tie wire or HPI Vise-Top Insulators with 2IP plate, if required. Pole mounting is accomplished using thru-bolts (not included).



System Voltage	Line Angle	Conductor Size	2IP Plate
15kV	7° - 60°	All conductors	not required
	61° - 90°	All conductors	required
25/35kV	7° - 44°	All conductors	not required
	45° - 60°	Below 336.4	not required
	45° - 60°	336.4 and larger	required
	61° - 90°	All conductors	required



Catalog No.	Dimension (inches)						Minimum Yield Load (lbs)			Weight (lbs)	Material
	A	B	C	D	E	F	V1	V2	V3		
BV-35	17 ³ / ₈	2 1/2	18 ³ / ₄	37 ⁵ / ₈	26 ⁷ / ₈	13 ¹ / ₁₆	1,150	1,600	1,100	17.3	HDG ASTM A-36 Structural Steel