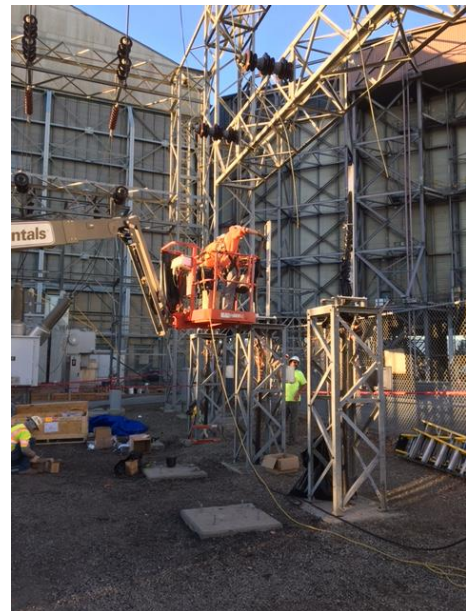


Kerite Cable Services Project Profile

Project	Phase 2 NASA Ames Research Center- 115kV Cable Replacement
Client	Jacobs Technology/ NASA
Location	Mountain View, CA
Cable Design	138kV, 1000 kcmil CU
Length	3,000 circuit feet
Subcontractors(s)	Anderson & Wood Construction Co., Inc.
Scope	Prime contractor for phase II (completed phase I in 2014) of the removal and new installation of two 138kV circuits used to power NASA's supersonic test wind tunnels. Scope also included the retrofit of new state of the art relay system, installation of lightning arresters, assembling twelve G&W PAT140 Outdoor In Air polymer terminations, three PMJ140 joint and completing a DC Hi-pot test at 240kV D



Low Pressure Oil Filled Cable Removal



Assembling 138kV terminations