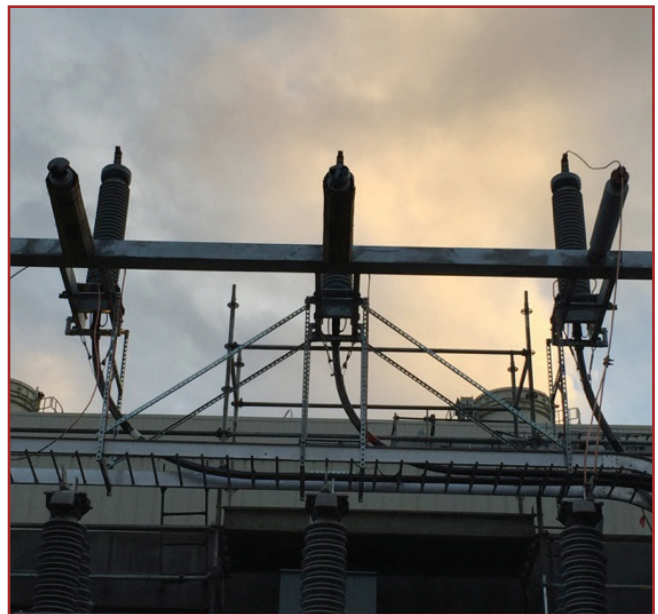


## Kerite Cable Services Project Profile

<b>Project</b>	ML&P 115kV GIS Substation
<b>Client</b>	MJ Electric / ML&P
<b>Location</b>	Anchorage, AK
<b>Cable Design</b>	115 kV, 1,750 kcmil Cu & 115 kV, 500 kcmil Cu
<b>Length</b>	9,300ft
<b>Subcontractor(s)</b>	Anderson & Wood Construction Co., Inc.
<b>Scope</b>	Oversee installation of five circuits of cable (15 lengths). Scope included performing 10 kV jacket integrity test, completion of 15 G&W PAT 140 terminations and performing 226 kV DC Hi-Pot test upon completion of the project.



Testing cable @ 226 kV DC



Newly installed G&W PAT 140 terminations