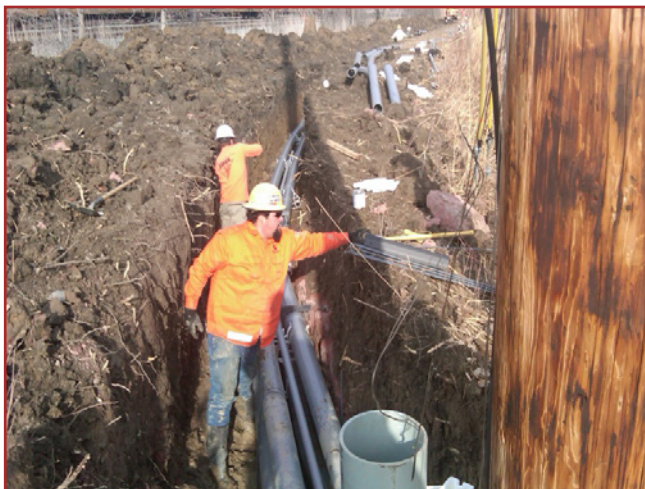


## Kerite Cable Services Project Profile

<b>Project</b>	First Energy Maclean- Pemberville 69kV Cable Replacement
<b>Client</b>	First Energy
<b>Location</b>	Toledo, OH
<b>Cable Design</b>	69 kV, 2000 kcmil CU – High Voltage Cable
<b>Length</b>	5,580 Circuit feet
<b>Subcontractor(s)</b>	Anderson & Wood Construction Company
<b>Scope</b>	Provided turnkey solution for two separate circuits. Constructed 1300 feet of concrete encased duct bank, pulled lengths of cable through ducts & built 12- G&W PAT 119 69kV terminals.



Construction of concrete encased duct bank.



KCS along with Anderson & Wood technicians work in two separate teams to complete G&W PAT 119 terminations on riser poles.